

Agreed schedule

The following subjects from the list were agreed on for consideration in the next few meetings:

Integration

Normalization, integration and inclusion are key terms in working with people with disabilities. Whenever legislation and social policy programmes demand their general implementation, they are seen to have not only advantages and ideal goals but also their shadow sides. It is common for the existence of institutions where people with disabilities are also residents to be threatened, with financial support about to be withdrawn. It will be our task to be in touch with the world-wide integration movement and ensure that precipitate or short-lived developments do not adversely affect our work.

What is an anthroposophical curative education or social therapy institution?

As the curative education and social therapy movement spreads, our work is getting more varied in range and kind. This also means uncertainties as to what is specific to anthroposophical curative education and social therapy. Parents in particular would be grateful for more clarity on this point.

Analysis of and dealing with internal and external pressures in our institutions

Internal pressures due to conditions of work, the problems the work presents, a hectic life and too few experienced co-workers, and external pressures due to increasing regimentation, legal impositions and economic aspects or inadequate funds are typical conditions of life in many countries and institutions. How do they relate to each other, and what strategies can we develop to cope with the need and the pressure and gain initiative powers for further development?

Economic issues in our movement

The work differs enormous from country to country, with financial resources also highly variable. Even in countries where the economic situation is good, too few resources are available for many tasks that need to be done. How can we develop a general awareness of conditions in the different countries and the potential for mutual support?

Other issues have been delegated to the Council's organs which will present their work to the Council in due course. They include

Partnerships and sexuality of people with disabilities

The principles and practical aspects of issues relating to partnership for people with disabilities have not been given sufficient attention until now (Social Therapy Group).

Research

The Science Group have been asked to produce an international review of research projects and issues.

The following subjects are proposed for discussion at plenary sessions in the immediate future.

General structure of the curative education and social therapy movement

The work of the Curative Education and Social Therapy Council can only bear fruit if it connects with effective structures in the different countries to keep the flow between Council and countries moving in either direction.

Training issues

Following completion of the training handbook, a number of questions have arisen concerning collaboration and recognition for training centres. These need the powers of judgement and commitment of the Council. Issues relating to training will therefore be considered by the Training Group at the next meeting.

As work on these issues progresses it also needs to be established how the results of this work are best communicated.

English name for Konferenz für Heilpädagogik und Sozialtherapie

The term 'Conference', which has been used until now, is rather ambiguous. In future the name will be 'Curative Education and Social Therapy Council'.

Next meeting

The next plenary meeting of the Council will be held within the framework of the Medical Section Conference on 16 - 19 September 2001.

During and after those days, people working in other fields within the Medical Section will also meet, as well as taking part in the main conference.

Ruediger Grimm

Secretary

Curative Education and Social Therapy Council



Meeting of Curative Education and Social Therapy Council 7 – 9 February 2001

The Curative Education and Social Therapy Council met for the first time in its new constellation as an organ made up of representatives from countries and spheres of work. 70 representatives had come from 31 countries.

Salutogenesis, curative education and social therapy

Michaela Gloeckler presented the paradigm of salutogenesis in her opening address. This is a new way of looking at medicine and psychology, with the focus primarily on the powers that make human beings healthy. This allows us to overcome the defect-orientated approach with one that concentrates on development. Salutogenic thinking originated with Antonovsky and Maslow, two scientists who when meeting people who had been able to maintain health in body and mind in spite of wartime experiences and the holocaust would ask which are the essential conditions for human health.

The principles described by Antonovsky, for example, refer to the dimensions of body, soul and spirit in the human being—in 'heterostasis' (people are not either sick or healthy, but always both), in the 'sense of cohesion' which teaches that events that injure and adversely affect people can be understood, have meaning and do not have to be borne passively. People are thus able to mobilize resistance from their own resources in every situation in life.

The very first sentence in Rudolf Steiner's curative education course makes the gesture of bringing healing and education

April 2001

together, making us aware that curative or 'healing' education has to do with the human being growing 'whole'—in the spiritual dimension this means thinking of the wholeness of the human being in his integrity, at the level of the psyche, to strengthen the sense of coherence out of the relationship between child and adult or adult and adult, and in the bodily dimension, where people with disabilities experience their wholeness to be incomplete, making development possible with the therapeutic effect. In terms of the story of creation, it is a matter of enabling every human being to make the connection with his higher self, his original wholeness.

Working with the Point and Circle Meditation

The Council worked with the Point and Circle Meditation in two plenary sessions. (The Meditation is a main theme in the journal *Seelenpflege* No. 1, 2001.)

How the Council works

The function of the Council is to maintain a world-wide network of curative education and social therapy and make it possible for questions, concerns and problems which are common across national boundaries can be shared and worked through effectively and with commitment. With the new form of the Council, the former system of appointing members (invited by the Medical Section) has been superseded by the representation

principle. Individual countries and Council organs elect their representatives who will serve a term of 3 or 4 years.

Functions of the Council

- Maintaining awareness of the international curative education and social therapy movement
- Flow of information between countries and the Medical Section
- Mutual advice and support, work on the spiritual scientific basis of curative education and social therapy
- Further and advanced co-worker training

Functions of Council members

- Interest in world-wide curative education and social therapy
- Interest in the further development of curative education and social therapy
- Awareness of the situation of institutions in their country of origin
- Readiness to be in touch and ability to see things in a wider context
- Readiness to represent their own country or region on the Council
- Readiness to represent the Council in their own country or region
- Ability and means to communicate information

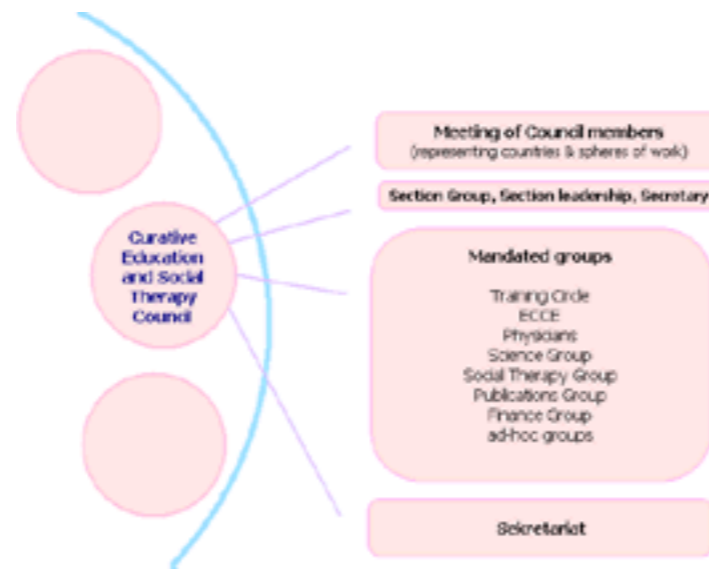
From its inception, the Council has established a number of organs to work on specific issues and subject areas. These will continue with the Council in its new form in so far as they serve a useful purpose in the collaboration.

Curative Education and Social Therapy Section Group

Being smaller, with 12 members, and meeting more frequently, this group is the link between the spheres of work in the Medical Section and the Council. It prepares the Council meetings and implements resolutions and work to be done. It also serves as an independent organ for creating awareness, dealing with particular tasks and setting goals.

The Council's organs

The Work of the Council is on the one hand done at its annual plenary meetings and on the other in a number of regular and ad-hoc groups given special mandates. The groups also send representatives to the Council.



Social Therapy Group

This meets biannually, once a year always in a different place, so that apart from their own work members get to know a new place and meet the local co-workers, and once a year always in the same place, so that work on specific themes may be deepened. The Group also organizes regular special subject conferences.

Training Group

For the last 3 years the Training Group has focused on producing a curative education and social therapy training handbook. Under the term of CESTE (Curative Education and Social Therapy in Europe) and supported by ECCE, the project has been partly funded by the European Union. Thanks to the collaboration with the 50 training centres all over the world, the project developed in close touch with practice and existing needs.

Physicians working in curative education and social therapy

The annual physicians' meetings are held in Dornach every second year and in different places in the other years. The themes are always matters relating to the medical treatment of children, young people and adults in need of special care. Drugs research, sharing views and information on therapeutic measures and further training in the anthroposophical study of man are at the core of the work.

European Co-operation for Anthroposophical Curative Education and Social Therapy (ECCE)

Realizing that changing conditions in the process of European unification call for watchfulness and engagement, ECCE was established as an organ uniting associations of parents and of institutions. Their work has led to the body having a seat in the European Disability-Forum (EDF). ECCE co-operates with other associations such as Inclusion Europe and Inclusion International, both of which unite specialist and parent associations for people with mental disabilities. In recent years ECCE has been concentrating on collaboration among anthroposophical parents' associations in the different European countries, actively encouraging close co-operation and also the establishment of new parents' associations.

Publications Group

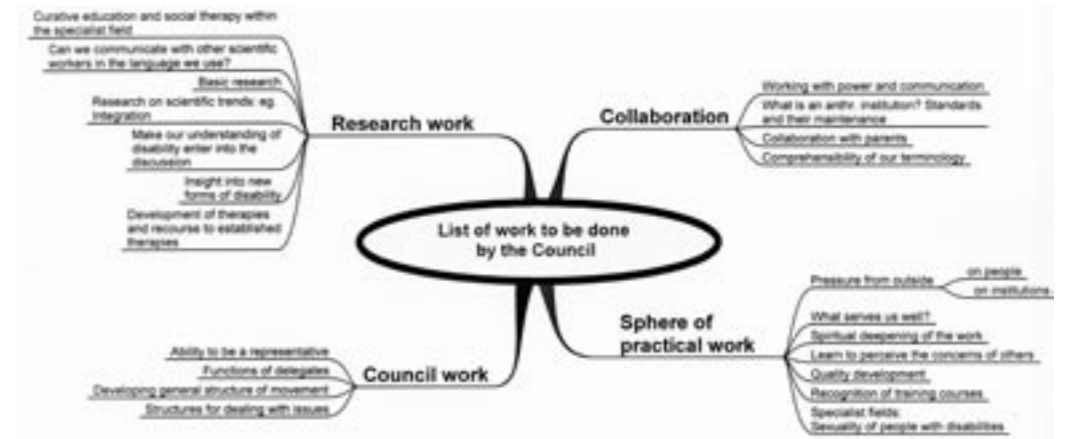
The Publications Group supports the Council's office staff on issues concerning anthroposophical curative education and social therapy publications. They seek to be aware of subject areas where work needs to be done and to encourage publishing projects.

Journals

The journal *Seelenpflege in Heilpädagogik und Sozialtherapie* and its English version *Journal for Curative Education and Social Therapy*, both quarterly, are intended for co-workers. Subject areas are issues relating to theory and practice in curative education and social therapy, consideration of social issues and reports on the movement's activities.

Science Group

The Group has existed for two years. The aim is to follow anthroposophical research relating to curative education, compare it with conventional research and see what they have in common and where they differ. The group wants to be involved in making the 'anthroposophical curative education' paradigm comprehensible beyond its own horizons. The Group also provides a basis for sharing information on scientific issues on which its members are working.



Curative Education and Social Therapy Fund / Finance Group

The Curative Education and Social Therapy Council is largely funded by the movement. This makes it possible to staff the Council's office in Dornach. A Finance Group monitors the financial situation of the Council, being responsible for the budget and annual statement of accounts. When the Council was first established, a body to take financial responsibility was also created. More recently, however, consideration has been given to making its part of the Goetheanum not only at the level of ideas, that is as part of the Medical Section, but also economically, maintaining the same system of financing.

Ad-hoc groups

Certain issues can be fully considered within a limited period. Currently a group has been asked by the Social Therapy Group to consider questions relating to the situation of people with disabilities who are getting older; another group is working on the history of anthroposophical curative education and social therapy, doing so in close collaboration with Forschungsstelle

Kulturimpuls (cultural impulse research centre) at the Friedrich von Hardenberg Institute in Germany and the Goetheanum Archives.

Conferences

Conferences for co-workers are an important area of the Council's work. Primary importance attaches to the major international curative education and social therapy conferences held biannually at the Goetheanum. These congresses have an overall theme, and offer a wide range of further training opportunities to co-workers. They are festive events in the life of our movement. They are complemented by special subject conferences.

Preparations for a conference on inner development for curative teachers and social therapists

For some time now we have been thinking of reviving the

earlier impulse to have conferences for developing inner faculties in curative education and social therapy. Initially they are not to be limited to members of the School of Spiritual Science but will be open to anyone interested in the subject. Many suggestions and proposals have been made for the conference to be held immediately following the Medical Section Conference in September 2001.

Proposed themes are the inner development aspects of the curative education course, especially the Point and Circle Meditation; an introduction to the book *How to Know Higher Worlds*; work on the accessory exercises, on issues relating to the Christology; work on threshold experiences, man's relationship to the hierarchies; an introduction to meditative work, etc.

The Section group has been asked to take responsibility for the running of the conference.

Work schedule

At this year's plenary meeting, the focus was on establishing a work schedule for the immediate future. Aspects of this were discussed in groups and presented at the plenum. A first list included the following main points. (see above)